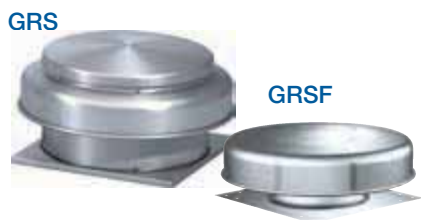


Gravity Ventilators



Model GRS, GRSF, FGI, FGR and RGU

Gravity ventilators are designed to relieve or take in air via building pressure. As buildings become pressurized, they will relieve the air from the building and as they come under a negative pressure, they will allow air into the building.

Quick Build Performance

GRS, GRSF capacities range from 170 to 8,100 cfm (intake performance) and 230 to 18,300 cfm (relief performance).

FGI capacities range from 264 to 108,000 cfm and 0.339 in. wg. of static pressure.

FGR capacities range from 233 to 96,750 cfm and 0.278 in. wg. of static pressure.

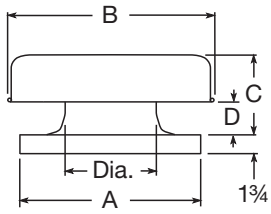
RGU capacities range from 1,460 to 24,031 and 0.7 in. wg of static pressure.

Standard Construction	GRS	GRSF	FGI, FGR	RGU	
Housing - spun aluminum	■	■			
Housing - fabra hood, galvanized or aluminum			■		
Housing - upblast, galvanized				■	
Birdscreen - galvanized	■	■	■		
Corrosion-resistant fasteners	■	■	■	■	
Butterfly dampers - galvanized, aluminum				■	
Options and Accessories	Stock	GRS	GRSF	FGI, FGR	RGU
Damper	✓	■	■	■	
Roof curb	✓	■		■	■
Roof curb accessories - adaptors, extensions		■	■	■	■
Damper lifters - fusible link, motorized					■
Birdscreen - aluminum		■	■	■	
Insect screen		■	■	■	
Insulation - 1/2 or 1-inch		■	■	■	
Filters - 2-inch aluminum, washable (FGI)				■	
Tie-down points		■	■	■	■
12-inch high base				■	
Decorative or protective powder coating		■	■	■	■
Certified for high wind applications				■	

Model	Best Available Program
GRS-8 through 30	In stock
GRSF-10 and 12	
GRS-36 through 48	1 Day
GRSF-8, 15 through 24	
FHI, FGR 10 x 10 through 72 x 180	5 Days
RGU-18 through 60	

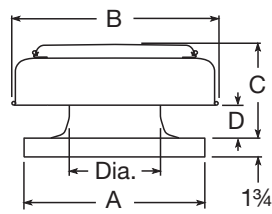
GRS

Sizes 8 thru 24



GRS

Sizes 30 thru 48



Dimensions for GRS, GRSF

Model Size	A	B	C	D	E	Dia.	Throat Area (ft ²)
8	19	20½	7¼	1½	20¼	8¼	0.37
10	19	20½	7¼	2	20¼	10¼	0.57
12	22	29	10	3½	23¼	12¼	0.82
15	22	29	10	3½	23¼	14¼	1.12
16	26	29	11	4¼	27¼	16¼	1.45
18	30	35½	9¼	1¼	31¼	20¼	1.83
20	30	35½	11¼	3¼	31¼	20¼	2.25
24	34	38¼	11	4	35¼	24½	3.24
30	40	48	18¾	5 ⁷ / ₁₆	—	30½	5.03
36	46	56¾	21¼	6	—	36½	7.29
42	52	63¼	24¼	6¼	—	42½	9.77
48	58	72	26¼	6½	—	48½	12.83

All dimensions are in inches.